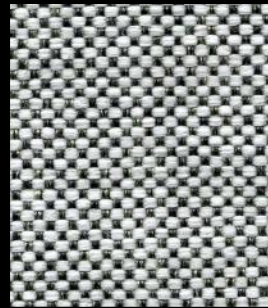


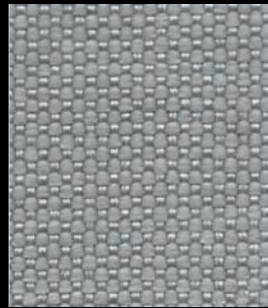
Angel

cat. A

100% PP FR (Nativa)
Flame retardant - 50.000 Martindale



601



600



201



203



408



200



102



401



400



402



503



403



404



406



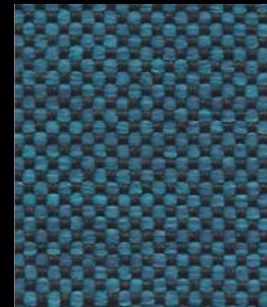
405



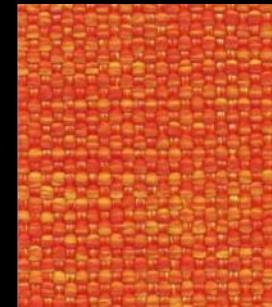
700



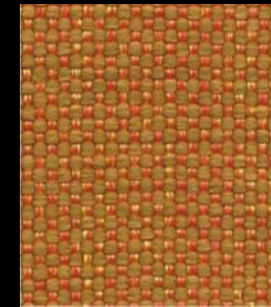
706



705



307



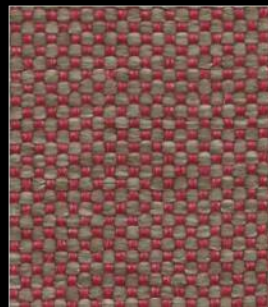
310



500



304



302



311



800



803



802



702

Technical details

Composition	100% PP FR (Nativa)
Weight	Gr./m². 350
Abrasion test	Martindale - ISO 12947-2: 50.000 rubs
Lightfastness	ISO 105-B02: 4/5
Pilling	ISO 12945-2: 4/5
Fastness to rubbing	ISO 105-X12: Wet 4/5 Dry 5
Flame retardant	UNI 9175 Class 1IM NF D 60-013:2006 (AM18) BS 5852 IS Crib 5 EN 1021 Part.1-2 USA Calif. Bull. 117:2013 FTP Code 307(88):10 Annex 1 Part 8
Features	Antistatic No-shrink Stain resistance Hypoallergenic Antibacterial Water repellent