

I-MEET®

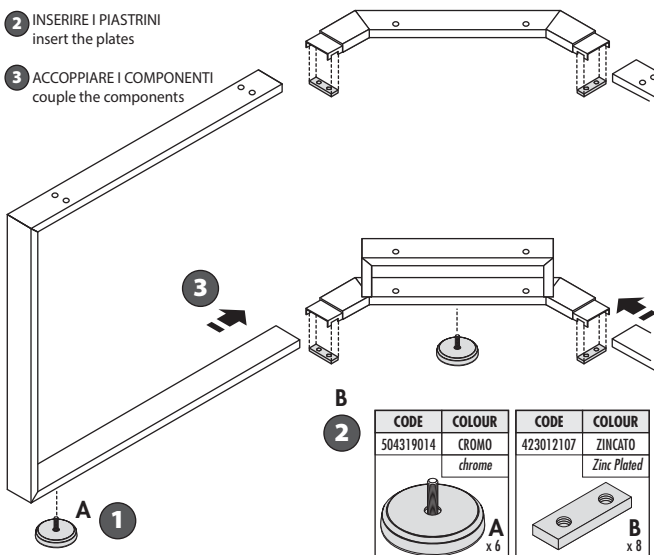
SCHEMA DI MONTAGGIO/assembly scheme
 TAVOLI RIUNIONE QUADRATI
 squared meeting tables:
ART. 548-648
ART. 518-618
IAS
 MOBILI PER UFFICIO

CODICE
 code **777 700 560**
DISEGNO
 drawing **SM 46001**
DATA
 date 04-12-2008
PAGINA
 page 1/2
INDICE DI REVISIONE N°
 last revision no **2**
DATA REVISIONE
 last date 12/03/2013

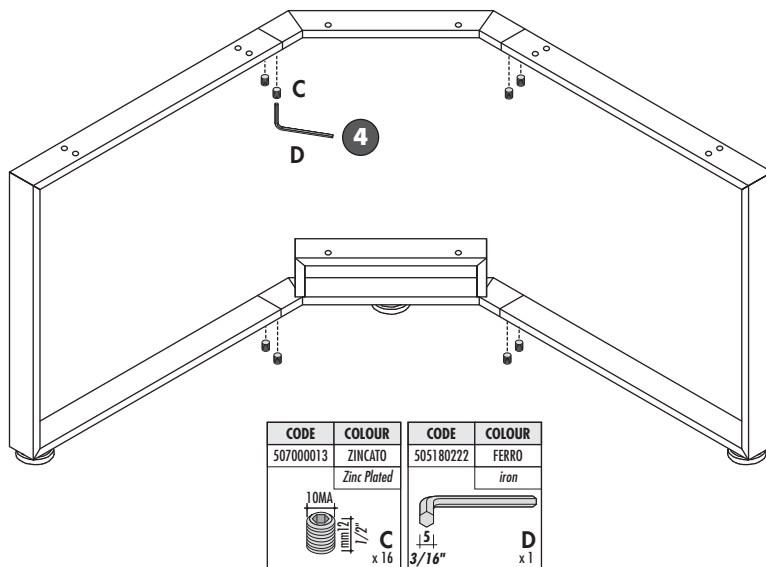
**N.B. PER IL MONTAGGIO
 SEGUIRE LE FASI NUMERATE**
assemble following the numbered phases

FASI / phases 1-2-3

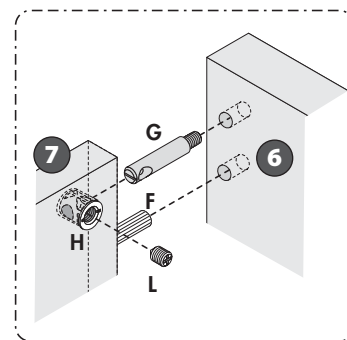
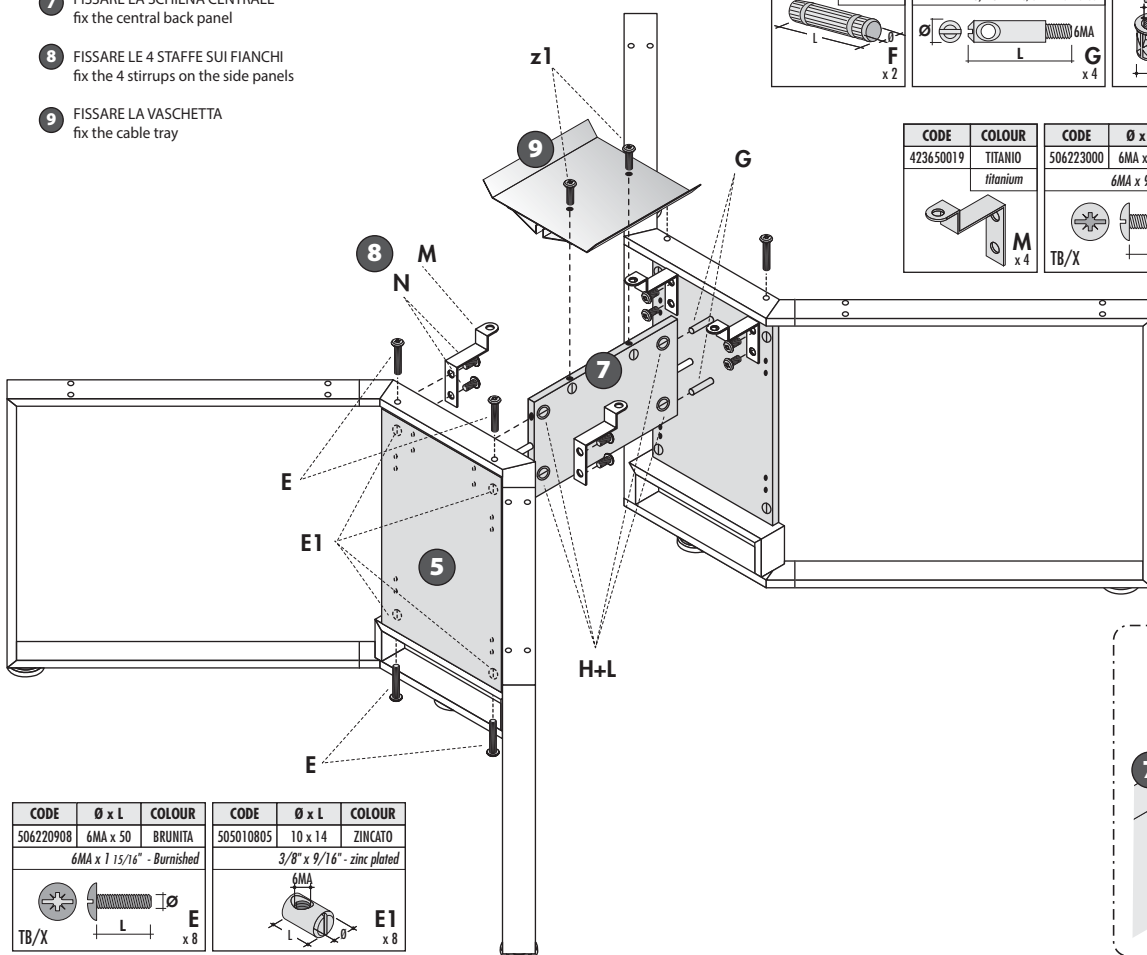
- 1 AVVITARE I PIEDINI
screw the adjustable feet
- 2 INSERIRE I PIASTRINI
insert the plates
- 3 ACCOPPIARE I COMPONENTI
couple the components


FASE / phase 4

- 4 AVVITARE I GRANI
screw the beads

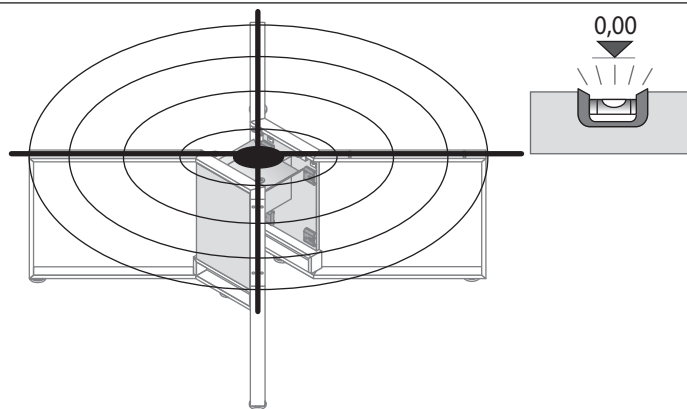
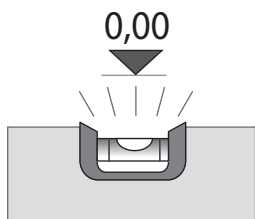

FASI / phases 5-6-7-8-9

- 5 FISSARE I 2 FIANCHI CON LE GAMBE METALLICHE
fix the 2 side panels with the metal legs
- 6 FISSARE LA SCHIENA CENTRALE
fix the central back panel
- 7 FISSARE LE 4 STAFFE SUI FIANCHI
fix the 4 stirrups on the side panels
- 8 FISSARE LA VASCHETTA
fix the cable tray



FASE / phase 10

- 10** ATTENZIONE! PRIMA DI FISSARE I PIANI
METTERE IN BOLLTA TUTTA LA STRUTTURA!
Attention! Level the structure before fixing the tops!

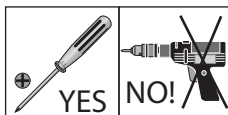


FASE / phases 11-12-13

- 11** MONTARE L'INSERTO CENTRALE
assemble the central top

- 12** FISSARE I 4 PIANI
ATTENZIONE! INDICAZIONI PARTICOLARI PER PIANI IN VETRO:
fix the 4 tops
FISSAGGIO MANUALE DELLE VITI! (NON USARE L'AVVITATORE)
attention! special indications for glass tops:
fix the screws manually! (do not use electric screwdriver)

- 13** INSERIRE I PANNELLI DI TAMPONAMENTO A SCATTO
insert the blind panels to "click"



| CODE | Ø x L | COLOUR |
|---------------------------|----------|---------|
| 506223000 | 6MA x 15 | ZINCATA |
| 6MA x 9/16" - Zinc Plated | | |
| TB/X | L | N x 4 |

| CODE | Ø x L | COLOUR |
|-----------------------------|----------|---------|
| 506225308 | 6MA x 30 | ZINCATA |
| 6MA x 1 3/16" - Zinc Plated | | |
| TB/X | L | P x 16 |

| CODE | COLOUR |
|-----------|--------|
| 505070702 | NERO |
| black | |
| Q | x 8 |

| CODE | COLOUR |
|-----------|--------|
| 505070703 | NERO |
| black | |
| R | x 8 |

| CODE | Ø x L | COLOUR |
|-----------------------|----------|---------|
| 506941908 | 3,5 x 25 | BRUNITA |
| 1/8" x 1" - Burnished | | |
| TSPX-PZ | L | R1 x 8 |

